

EFFICIENT. RELIABLE. EFFECTIVE.

XL-HT and XL-HTHH Dishmachines

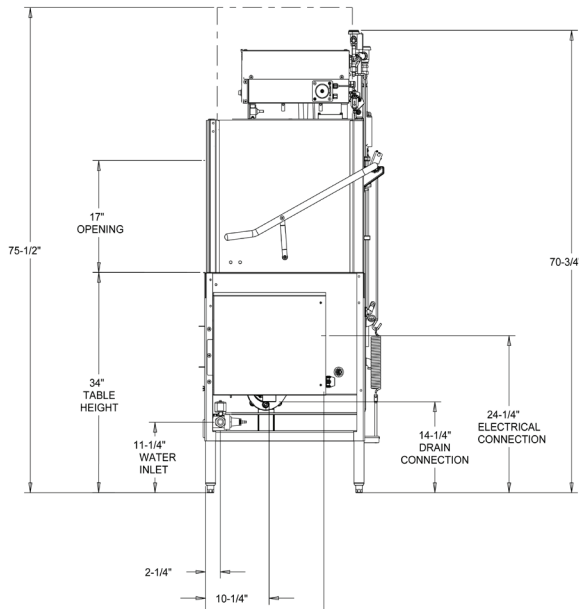
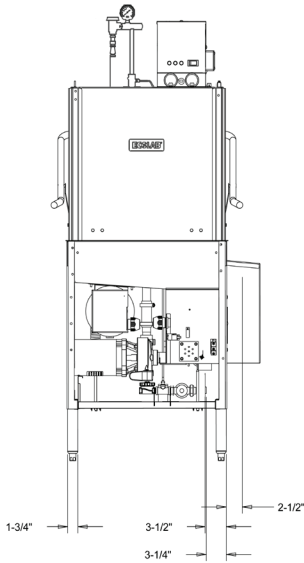
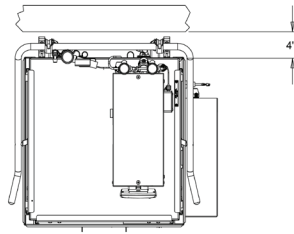
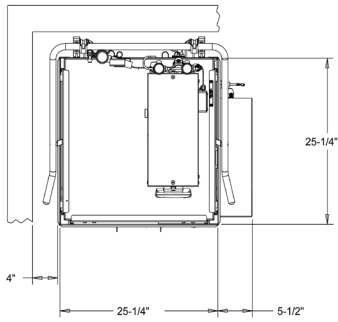
- ▲ **High-temperature** machine design with onboard booster heater delivers superior results.
- ▲ **Ecolab chemistry** is uniquely positioned for superior results every time.
- ▲ **Energy Star®** rating helps reduce operating costs.

Renting a dishmachine from Ecolab allows you to focus on your business with the security of knowing your warewashing operation is properly managed.



ECOLAB DISHMACHINE RENTAL PROGRAM

The highest level of clean backed by service you can trust.



XL-HT SPECIFICATIONS

OPERATING CAPACITY		
Racks per Hour	57	
OPERATING CYCLE NORMAL		
Wash Time	46	
Dwell Time	2	
Rinse Time	10	
Load Time	5	
Total Cycle Time	63	
OPERATING TEMPERATURES		
Wash (minimum)	150 ° F	
Sanitizing Rinse (minimum)	180 ° F	
WATER CONSUMPTION		
Gallons per Rack	0.83	
ELECTRICAL RATINGS		
Wash Pump Motor, Horsepower	3/4 hp	
WASH CHAMBERS		
Height	17"	
WEIGHT		
Machine Weight	340 lb	
UTILITY REQUIREMENTS, ELECTRICAL		
	Power Connection	
	Single	Multiple*
Voltage/Frequency/Phase: 208V/60Hz/1 Ph		
Total Amperage	84.0 A	51.0/33.0 A
Minimum Electrical Circuit	90 A	60/40 A
Voltage/Frequency/Phase: 208V/60Hz/3 Ph		
Total Amperage	51.7 A	29.4/22.3 A
Minimum Electrical Circuit	60 A	35/30 A
Voltage/Frequency/Phase: 240V/60Hz/1 Ph		
Total Amperage	94.7 A	58.3/36.4 A
Minimum Electrical Circuit	110 A	70/45 A
Voltage/Frequency/Phase: 240V/60Hz/3 Ph		
Total Amperage	57.7 A	33.7/24.0 A
Minimum Electrical Circuit	70 A	40/35 A
Voltage/Frequency/Phase: 480V/60Hz/3 Ph		
Total Amperage	29.7 A	18.3/11.4 A
Minimum Electrical Circuit	40 A	25/15 A
WATER		
Hot Waterline Size (minimum)	1/2"	
Flow Pressure (required)	15-25 psi	
Incoming Temperature (minimum)	110 ° F	
DRAIN		
Drainline Size (minimum)	1-1/2"	
VENT HOOD		
Flow-Cubic Feet per Minute	400	

*Booster/Machine

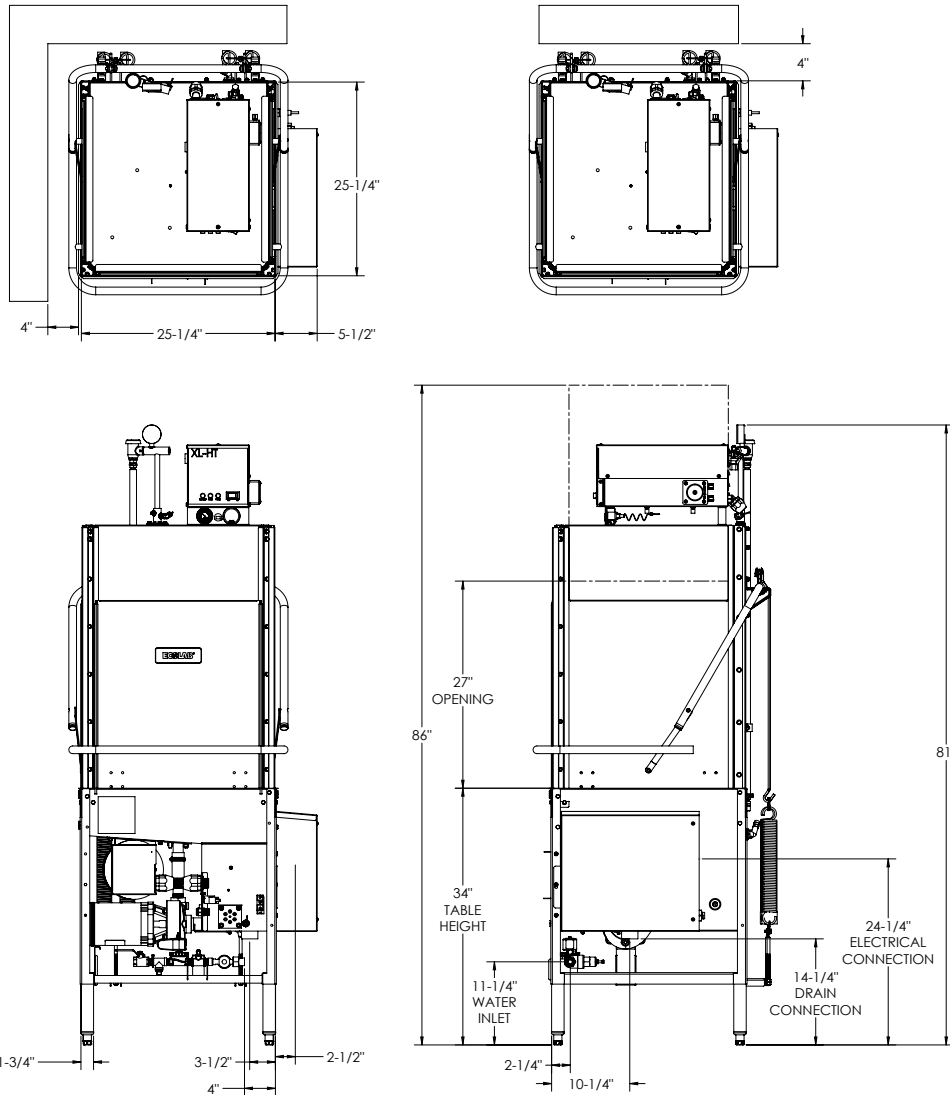
Pair with Ecolab Chemistry

All 240V are dual rated for 240V and 208V operation (see IO Manual for more information)



ECOLAB DISHMACHINE RENTAL PROGRAM

The highest level of clean backed by service you can trust.



XL-HTH SPECIFICATIONS

OPERATING CAPACITY		
Racks per Hour	57	
OPERATING CYCLE NORMAL		
Wash Time	46	
Dwell Time	2	
Rinse Time	10	
Load Time	5	
Total Cycle Time	63	
OPERATING TEMPERATURES		
Wash (minimum)	155° F	
Sanitizing Rinse (minimum)	180° F	
WATER CONSUMPTION		
Gallons per Rack	0.83	
ELECTRICAL RATINGS		
Wash Pump Motor, Horsepower	3/4 hp	
WASH CHAMBERS		
Height	27"	
WEIGHT		
Machine Weight	350 lb	
UTILITY REQUIREMENTS, ELECTRICAL		
	Power Connection	
	Single	Multiple*
Voltage/Frequency/Phase: 208V/60Hz/1 Ph		
Total Amperage	84.0 A	51.0/33.0 A
Minimum Electrical Circuit	90 A	60/40 A
Voltage/Frequency/Phase: 208V/60Hz/3 Ph		
Total Amperage	51.7 A	29.4/22.3 A
Minimum Electrical Circuit	60 A	35/30 A
Voltage/Frequency/Phase: 240V/60Hz/1 Ph		
Total Amperage	94.7 A	58.3/36.4 A
Minimum Electrical Circuit	110 A	70/45 A
Voltage/Frequency/Phase: 240V/60Hz/3 Ph		
Total Amperage	57.7 A	33.7/24.0 A
Minimum Electrical Circuit	70 A	40/35 A
Voltage/Frequency/Phase: 480V/60Hz/3 Ph		
Total Amperage	29.7 A	18.3/11.4 A
Minimum Electrical Circuit	40 A	25/15 A
WATER		
Hot Waterline Size (minimum)	1/2"	
Flow Pressure (required)	15-25 psi	
Incoming Temperature (minimum)	110° F	
DRAIN		
Drainline Size (minimum)	1-1/2"	
VENT HOOD		
Flow-Cubic Feet per Minute	400	

*Booster/Machine

Pair with Ecolab Chemistry

All 240V are dual rated for 240V and 208V operation (see IO Manual for more information)